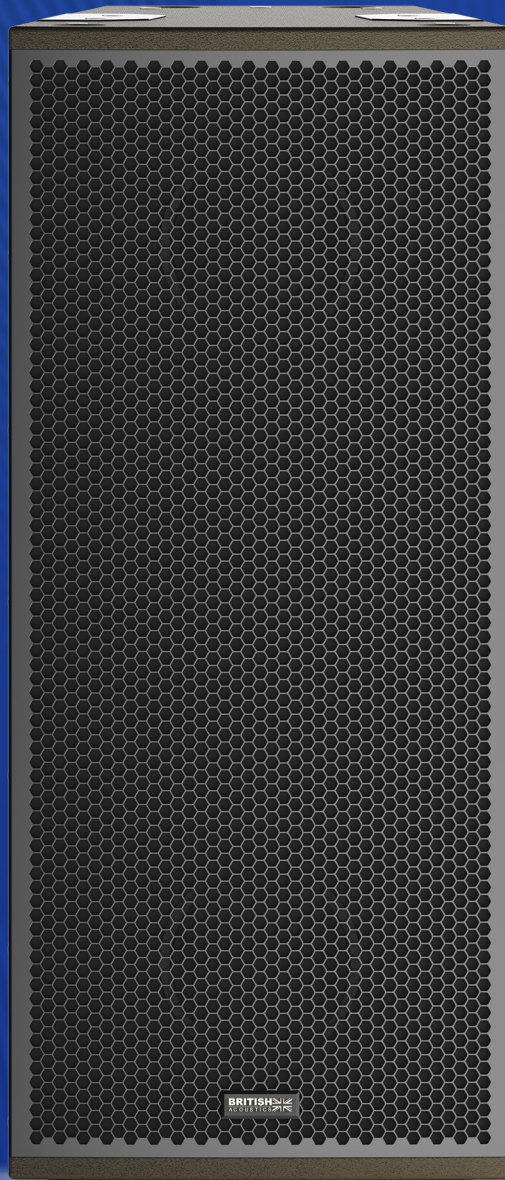


# ALPHA CLUB ONE

2 X 11.25", 3-WAY HORN LOADED CLUB SYSTEM



  
BRITISH ACOUSTICS

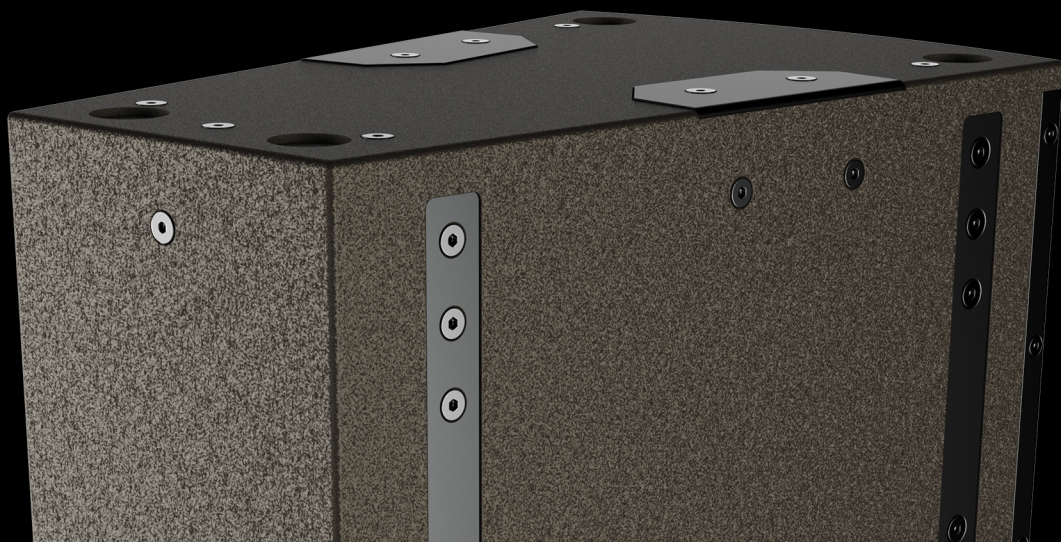


# ALPHA CLUB ONE 3-WAY HORN-LOADED SYSTEM

The Alpha Club One is a powerful and intelligently engineered 3-way horn-loaded loudspeaker system designed for high-performance club installations. Featuring two 11.25" Delta Drive low-frequency drivers with copper voice coils and Fortex™ weather-resistant cones, it delivers 500W AES of ultra-tight bass per driver, ensuring commanding low-end impact across the dancefloor. The system integrates a 1.4" MF compression driver and dual 1.25" HF compression tweeters, offering exceptional midrange clarity and sparkling highs.



The passive crossover network operates at 630 Hz and 6.3 kHz, optimally aligning the LF, MF, and HF components for seamless audio reproduction. With selectable dispersion patterns ( $70^{\circ} \times 40^{\circ}$  or  $90^{\circ} \times 50^{\circ}$ ), the Alpha Club One adapts effortlessly to different venue geometries. Built with a marine birchply enclosure and protected by a stainless steel grille, the cabinet is as rugged as it is refined, finished in British Acoustics' signature umber brown tone with blue decal accents.





## ACOUSTICAL SPECIFICATIONS

- Freq. Response (-3 dB) : 90 Hz - 23 kHz
- Freq. Range (-10 dB) : 72 Hz - 20 kHz
- Rated Power :  
HF: 80W / 320W Peak  
MF: 80W / 320W Peak  
LF: 2 x 500W / 2 x 2000W Peak
- Dispersion : 70° x 40° (-6 dB) Standard,  
90° x 50° (-6 dB) Wide
- User Rotatable Horns
- Crossover : Active 630 Hz & 6.3 kHz
- Nominal Impedance :  
HF: 8Ω  
MF: 8Ω  
LF: 2 x 8Ω
- Max Output: Cont 137 dB, Peak 143 dB
- 2 x NL-8 Speak-On Sockets, Input & Thru

## SYSTEM SPECIFICATIONS

- Recommended Subwoofers : See Systems Chart for compatible subwoofers
- Recommended System Control : Delta Drive DSP Control Systems
- Recommended Amplifiers : See Amplifier load calculation chart

## LF TRANSDUCER

- 11.25" Low Frequency Delta Drive 3.5" VC
- Two Drivers, Connected Individually
- 500W AES, 2000W Peak
- Copper Voice Coil - In/Out Wound
- Optimised Gap Geometry for higher magnetic flux
- Enhanced Heat Dissipation
- Fortex™ Weather Resistant Cones

## MF TRANSDUCER

- 1.4" Exit HF Compression Driver
- 80W AES, 200W Peak
- 3" Voice Coil - Ferrite Magnet
- Standard or Wide Waveguide options

## HF TRANSDUCER

- 1.25" Exit HF Compression Driver
- 2 tweeters connected in parallel
- 40W AES, 200W Peak
- 1.25" Voice Coil - Ferrite Magnet
- Conical Club Waveguide

## HOUSING

- Marine Birchply Enclosure
- Granular Scratch Free Polyurea Paint

- Perforated Stainless Steel Grill backed by acoustically transparent foam over a stainless steel mesh
- Sloped Input Plates for better cable management & ingress protection
- British Acoustics Signature Brown Paint
- M10 Flying inserts
- Half-Octagon Rigging Block to fly multiple units
- Integrated Handles for handling

## AESTHETIC SPECIFICATIONS

- British Acoustics Signature Umber Brown Tone
- Blue Decals on Grills for better Aesthetics
- Available in a RAL code of your choice (24 nos, minimum)

## IP SPECIFICATIONS

- Standard Version : IP 42 - Offers basic protection against dust & splashes

## OPERATING PARAMETERS

- Operating positions: Can be deployed

horizontally or vertically with the correct installation brackets or can be used as a monitor

- Maximum permitted ambient temperature (Ta max) 55° C (124° F)
- Minimum permitted ambient temperature (Ta min): -20° C (-4° F)

## OPTIONAL ACCESSORIES

- See system chart for the System Accessories

## SIZE

- Product: 922 x 457 x 660 mm (H x W x D)
- Product: 36.3 x 18.0 x 26.0 inch (H x W x D)
- Packed individually

## WEIGHT

- Net : 67.0 Kgs
- Net : 53.3 Lbs

## SHIPPING INFORMATION

- Carton Size  
760 x 519 x 443 mm (H x W x D)  
29.9 x 20.4 x 17.4 inch (H x W x D)
- Gross Weight : 25.3 Kgs / 55.78 Lbs
- Packed : Individually

## PRODUCT INFORMATION

- Model No : Alpha Club One
- Series 4
- Tags : 2 x 11.25", 3-way Horn Loaded Club System

BA & British Acoustics are registered trademarks in the UK and other regions worldwide  
Safe Installation & Rigging Practices : Installation must be by authorized personnel, following safety and rigging standards to avoid liability.  
\*Product specifications and design may change due to raw material variations or the addition of new features and technologies for improved performance and reliability.  
\*SPL Calculated @ 1m, Free Field with Pink Noise - Crest Factor 4







One Basecamp, 49 Jamaica Street, Liverpool, L10AH, Great Britain.  
Email - [info@britishacoustics.com](mailto:info@britishacoustics.com) | Tel - +44 (0) 151 515 0170  
[www.britishacoustics.com](http://www.britishacoustics.com)