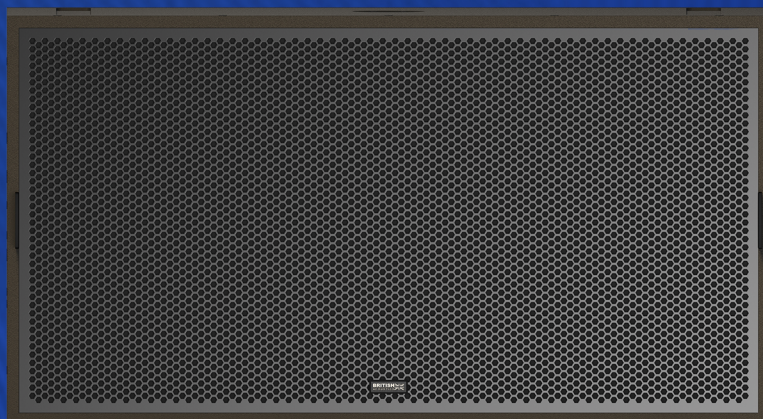


# ALPHA SUB 428 S WR

TWIN 18" PASSIVE WEATHERISED SUBWOOFER



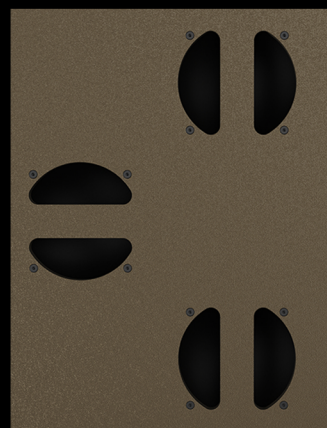


# ALPHA SUB 428 S WR PASSIVE SUBWOOFER

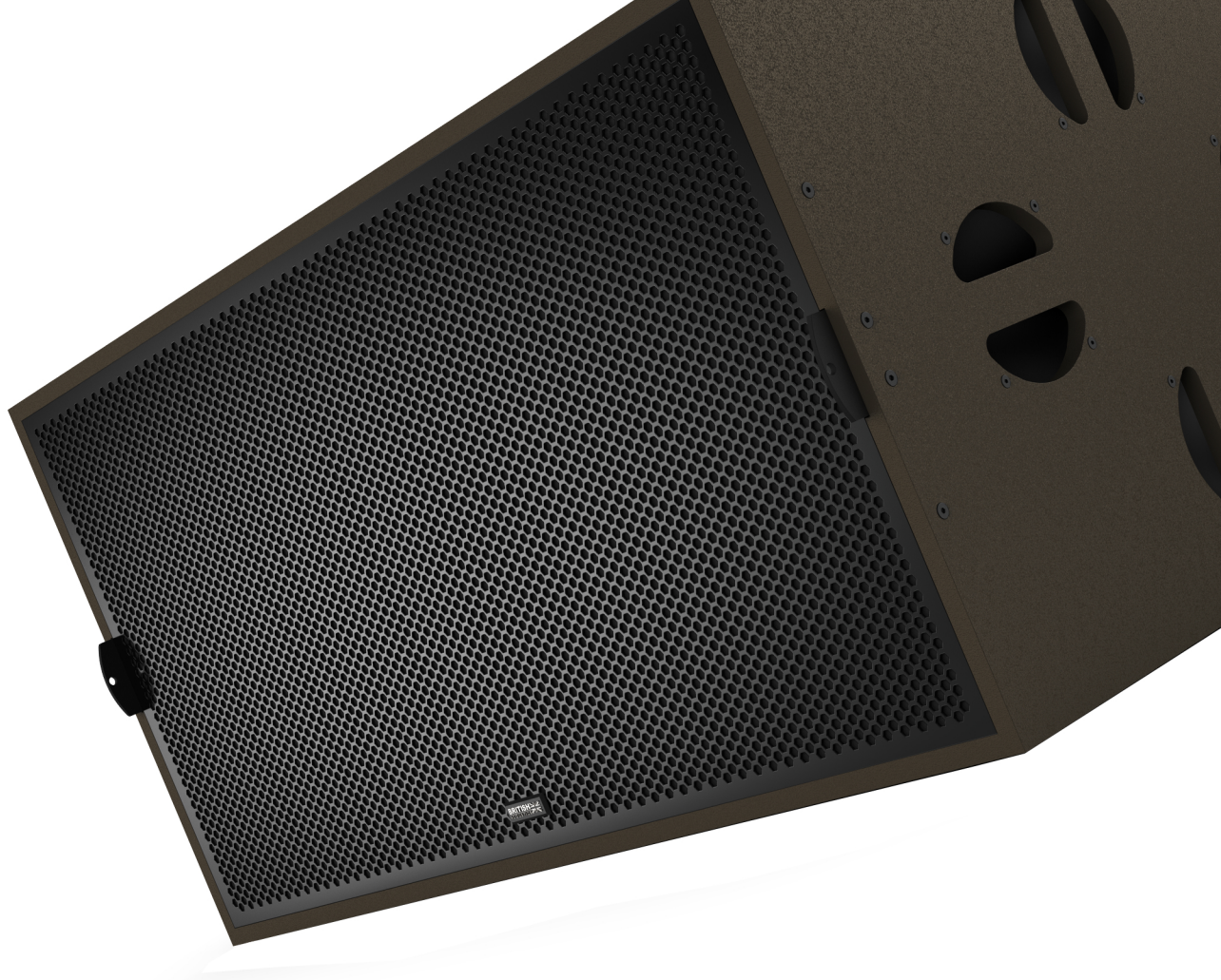
The British Acoustics Alpha Sub 428 S WR is a twin 18-inch passive subwoofer engineered for delivering powerful and precise low-frequency audio. It features dual 18-inch long-excursion drivers with 4-inch copper voice coils, offering 1200W AES power and a peak of 4800W. Its omni-directional coverage ensures even sound dispersion, while cardioid presets provide flexibility for advanced setups, making it perfect for live events, installations, and demanding applications.



Crafted with a robust birch wood enclosure and coated with scratch-resistant polyurea paint, the Alpha Sub 428 S WR offers exceptional durability. The perforated stainless steel grills backed by acoustically transparent foam enhance protection without compromising performance. Rated at IP54 for resistance to dust and water, this subwoofer is designed to withstand tough environments. Additional features include sloped input plates for optimized cable management and integrated M10 flying inserts for versatile rigging. Accessories like castor wheels and pole mounts add to its adaptability, making it a reliable choice for professional audio systems.







## ACOUSTICAL SPECIFICATIONS

- Freq. Response (-3 dB) : 32 Hz - 190 Hz
- Freq. Range (-10 dB) : 37 Hz - 200 kHz
- Rated Power : 2400W AES, 9600W Peak
- Omni-Directional Coverage
- Cardioid presets available
- Nominal Impedance : 4  $\Omega$
- Crossover : 80 - 120 Hz Active
- Max Output: Cont 136 dB, Peak 142 dB
- 2 x Speak-On Sockets, Input & Thru

## SYSTEM SPECIFICATIONS

- Recommended System Control : Delta Drive DSP Control Systems
- Recommended Amplifiers : See Amplifier load calculation chart

## LF TRANSDUCER

- 18" Low Frequency Long Excursion Driver
- 1200W AES, 4800W Peak
- 2 Drivers connected in parallel
- 4" Copper Voice Coil - Ferrite Magnet
- 3L Resistance Coating

- Minimal Power Compression with optimised air-paths
- Aluminum Demodulation Ring for reduced distortion

## HOUSING

- Marine Birchply Enclosure
- Granular Scratch Free Polyurea Paint
- Perforated Black, Pressed Steel Grills
- Integrated Handles on Either Side
- Includes a set of round bottom feet for secure and stable stacking
- Sloped Input Plates
- M10 Flying inserts
- Installation brackets : Alpha Throne (H), Alpha Throne (V), Alpha Yoke B410

## RIGGING

- M10 Flying Inserts
- Integrated Handles - M-10 insertion points

## IP SPECIFICATIONS

- WR Version : IP 54 - Offers greater resistance against dust & water

## AESTHETIC SPECIFICATIONS

- British Acoustics Signature Umber Brown Tone
- Blue Decals on Grills for better Aesthetics
- Available in a RAL code of your choice (24 nos, minimum)

## OPERATING PARAMETERS

- Operating positions: Can be used horizontally or vertically and can be used as a stack of subs
- Maximum permitted ambient temperature (Ta max) 55° C (124° F)
- Minimum permitted ambient temperature (Ta min): -20° C (-4° F)

## OPTIONAL ACCESSORIES

- See system chart for the System Accessories

## SIZE

- Product: 508 x 1198 x 762 mm (H x W x D)
- Product: 20x 47.2x 30 inch (H x W x D)
- Packed individually

## WEIGHT

- Net : 82 Kgs
- Net : 180 Lbs

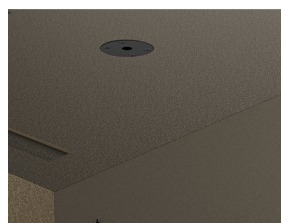
## SHIPPING INFORMATION

- Carton Size  
583 x 1273 x 837 mm (H x W x D)  
23 x 50 x 33 inch (H x W x D)
- Gross Weight : 86.1 Kgs / 189.8 Lbs
- Packed : Individually

## PRODUCT INFORMATION

- Model No : Alpha Sub 428 S WR
- Series 4
- Tags : Twin 18" Passive Weatherised Subwoofer

BA & British Acoustics are registered trademarks in the UK and other regions worldwide  
Safe Installation & Rigging Practices : Installation must be by authorized personnel, following safety and rigging standards to avoid liability.  
\*Product specifications and design may change due to raw material variations or the addition of new features and technologies for improved performance and reliability.  
\*SPL Calculated @ 1m, Free Field with Pink Noise - Crest Factor 4







One Basecamp, 49 Jamaica Street, Liverpool, L10AH, Great Britain.  
Email - [info@britishacoustics.com](mailto:info@britishacoustics.com) | Tel - +44 (0) 151 515 0170  
[www.britishacoustics.com](http://www.britishacoustics.com)